

Welcome to Wisma Kebudayaan SGM (WKSGM)

More than just a building, WKSGM is a hub for cultural events and exchanges that dedicate itself to promoting mutual understanding in a multicultural society and connecting communities through art.

Organiser 主办:



HARMONI
Soka Art & Culture

Co-organisers 协办:



王耀麟
百幅肖像

Sat 25 / 2
2023

我的朋友们

My Friends
Heng Eow Lin 100 Portraits Exhibition

Sun 26 / 3
11.00 Tue
17.00 Sun

Wisma Kebudayaan SGM | Soka Exhibition Hall
SGM 综合文化中心 | 创价展览厅
243, Jalan Bukit Bintang, 55100 Kuala Lumpur, Malaysia.

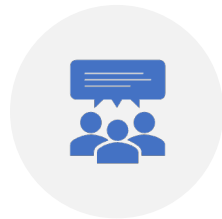


作品展

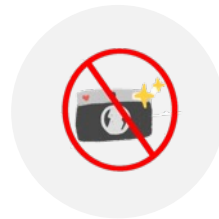
Before you visit us, we thank you and your children for studying and adhering to the gallery rules.



DO NOT TOUCH
THE ARTWORKS



DISCUSS SOFTLY
WITH ONE ANOTHER



YOU CAN TAKE PHOTOS,
BUT PLEASE
TURN OFF THE FLASH



NO FOOD, DRINK OR
CHEWING GUM IS
ALLOWED IN THE GALLERY



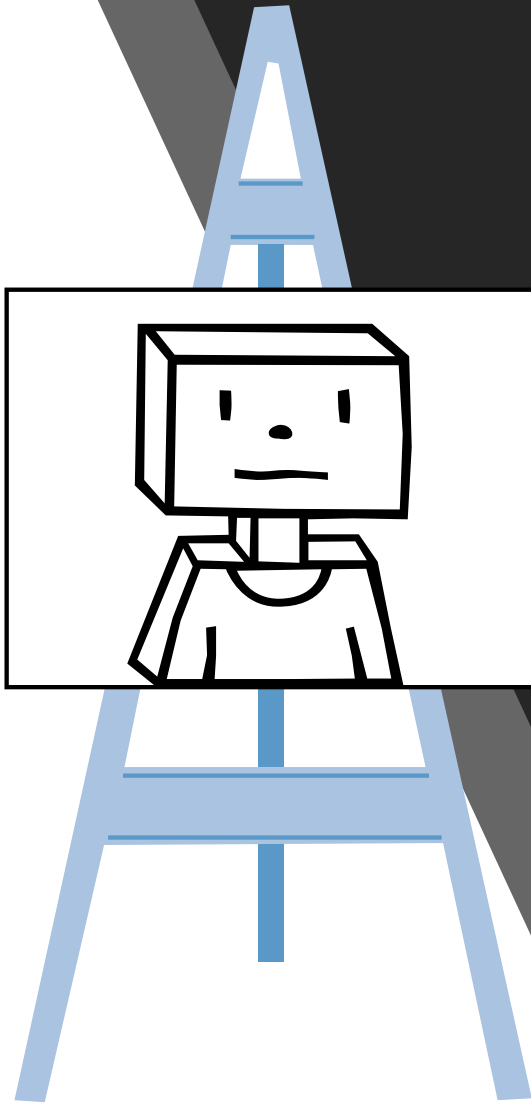
WALK,
DO NOT RUN

* This worksheet is suitable for 9 - 15 years old students.



Information that are good to know before your visit.
Let's study together with your family, children or friends.

What is a portrait?



A portrait is a work of art that depicts a person. The person in the picture is often called a “sitter” because, before photography, he or she had to sit in front of the artist to have the portrait created.

Your school photograph is an example of a portrait.

In addition to how the sitter looks, clothing and objects in a portrait may also tell you what the sitter does for a living (farmer, soldier, artist, etc.) or how he or she wished to be remembered.

The more carefully you look at someone’s portrait, the more you learn about them.

Look at the following artworks and learn the different ways of drawing portraits.

Mona Lisa

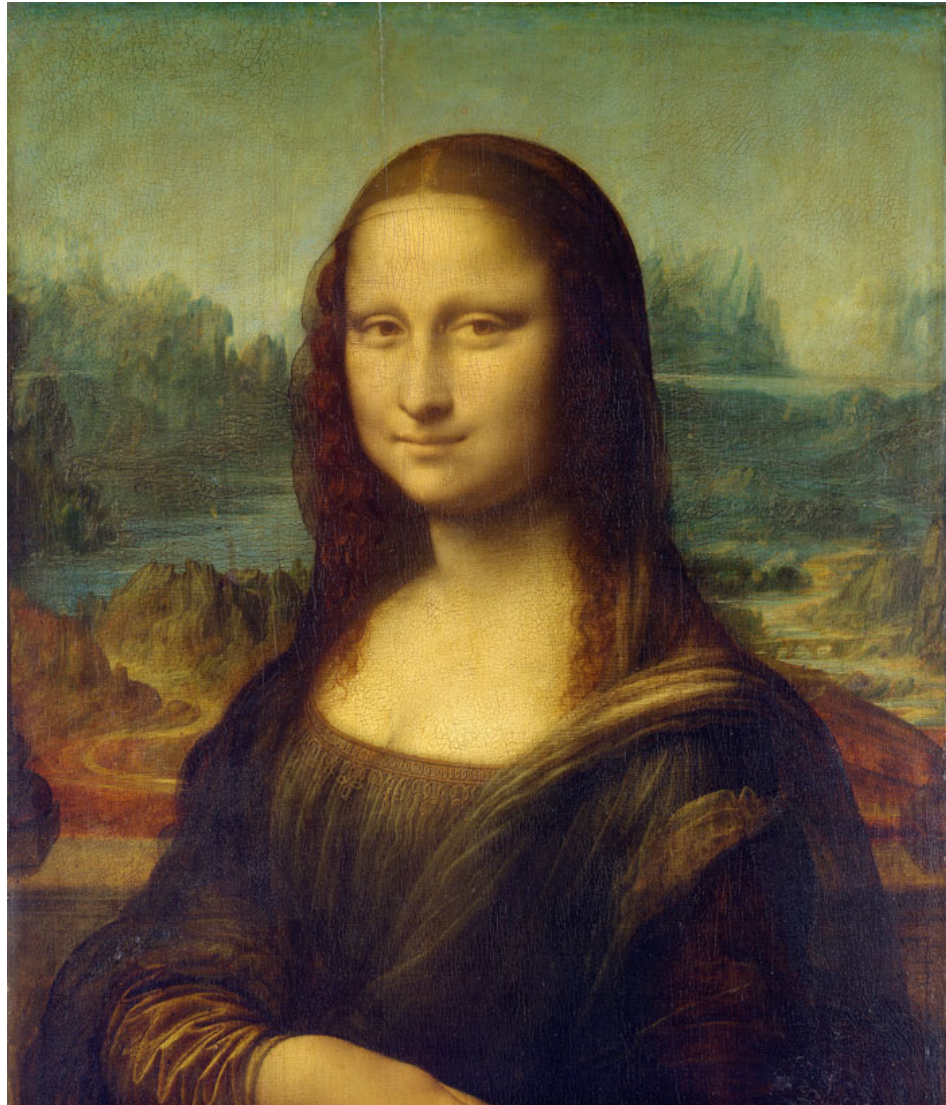
Artist: Leonardo da Vinci

Medium: Oil on poplar panel

Dimensions: 77 cm x 53 cm

Year: 1503-1519

Where It Is Currently Housed: Louvre Museum, Paris



Leonardo da Vinci (1452 - 1519) was a painter, engineer, architect, inventor and student of all things scientific. His paintings *The Last Supper* and *Mona Lisa* are one of the most well-known paintings of all time.

The background landscape behind the sitter was created using aerial perspective, with its smoky blues and no clearly defined vanishing point, giving the composition significant depth.

When looking at the composition of the Mona Lisa, a triangle is subtly made through the position of her folded arms that leads up to her head. While this pose was known to be popular at the time, the nuanced way that da Vinci captured it helped to focus all attention on her interesting face.

Vertumnus

Artist: Giuseppe Arcimboldo

Medium: Oil on panel

Dimensions: 68 cm x 56 cm

Year: 1590

Where It Is Currently Housed: Skokloster Castle, Sweden



Giuseppe Arcimboldo (1527-1593) was an Italian Mannerist painter whose grotesque compositions of fruits, vegetables, animals, books, and other objects were arranged to resemble human portraits.

This painting depicts Rudolf II, Holy Roman Emperor, as Vertumnus, a god in Roman mythology associated with gardens, fruit trees and changing seasons.

The pure talent of Arcimboldo must be praised, he carefully chose which objects to use. By depicting flowers and fruits from all seasons, Arcimboldo subtly symbolized the abundance and harmony of Emperor Rudolf's reign.

The Weeping Woman

Artist: Pablo Picasso

Medium: Oil on canvas

Dimensions: 60.8 cm x 50 cm

Year: 1937

Where It Is Currently Housed: Tate Modern, London



Pablo Picasso (1881–1973) was a Spanish expatriate painter, sculptor, printmaker, ceramicist, stage designer, and one of the greatest and most-influential artists of the 20th century and the creator (with Georges Braque) of Cubism.

The Weeping Woman is based on an image of a woman holding her dead child. It is taken from Picasso's anti-war mural, *Guernica*. The sitter is based on artist and photographer Dora Maar, who photographed Picasso's making of *Guernica*.

The Weeping Woman is an iconic image of unspeakable grief and pain, representing universal suffering. The fragmented features and the use of acid green and purple heighten the painting's emotional intensity.



Self-Portrait

Artist: Heng Eow Lin

Medium: Oil on canvas

Dimensions: 50 cm x 50 cm

Year: 2020-2022

Heng Eow Lin (1946-) was born in Kulim, Kedah, Malaysia. He graduated from the Nanyang Fine Arts College (now Nanyang Academy of Fine Arts, Singapore) in 1970, and he was under the guidance of many great teachers such as Georgette Chen and Lim Yew Kuan. Since then, he has started his career as a professional artist and sculptor.

This exhibition showcases over a hundred of his oil portraits and the subjects are the people whom he encounters throughout his life, highlighting the importance of friendship. Heng's portraits tell touching stories of human affection and convey the warmth of friendship and the brilliance of humanity to the audience.

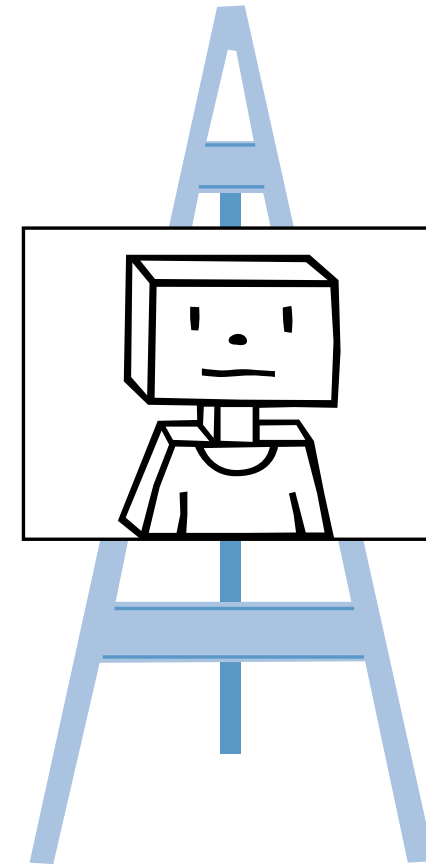
During your visit, things to talk and think about in the gallery:
Discuss the following questions with your children, partner or group.

Find a portrait of someone whom you would like to meet. Why?

What do you notice about the person in the painting?

Describe the person's facial expression. What might he or she be thinking?

Describe the posture, clothes, or background settings of the portraiture.



Things to do at home: Draw Yourself A Portrait!



Draw or paint a portrait of yourself.



What will you include that shows who you are?



Show what you are feeling by drawing your expression and pose.



If you'd like, give your portrait to a friend.



* Print this page and bring your clipboard and drawing materials if you wish to do this activity in the gallery.



Things to do at home: Draw Your Best Friend A Portrait!



Draw or paint a portrait of your best friend.



What will you include that shows who your best friend is?



Show his or her feeling by drawing the expression and pose.



If you'd like, give the portrait you created to your best friend.



* Print this page and bring your clipboard and drawing materials if you wish to do this activity in the gallery.



For more information, follow and stay tuned to our



<https://harmoni-soka.org>



<https://www.facebook.com/HarmoniSokaArt>



<https://www.instagram.com/harmonisokaart/>

Need Assistance? Please feel free to contact us any time at +603-21448686.
We are more than happy to assist you.