

# 水韵之美

第四届水映天地国际交流展

7.08  
8.27

2023

The 4th  
Reflection of  
Nature:  
International  
Water Medium  
Art Exhibition

11.00-17.00 | Tue 周二-Sun 周日

Wisma Kebudayaan SGM  
SGM 综合文化中心  
243, Jalan Bukit Bintang. 55100, Kuala Lumpur. Malaysia

Organisers:



HARMONI

Solo Art & Culture



Co-organiser:



Supporter:

ADMD

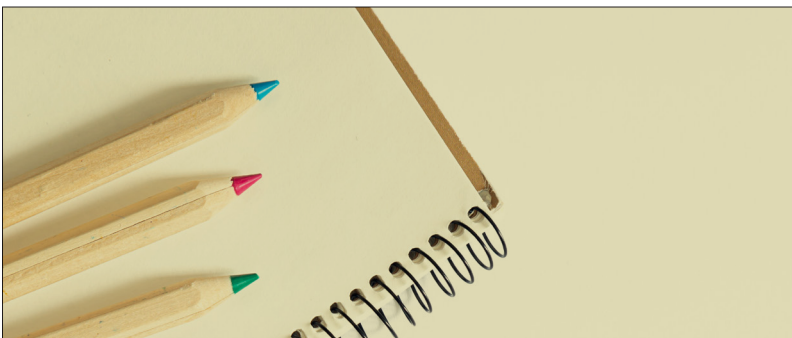
Curator: Becky Choong  
策展人: 庄梦轩

# ACTIVITY WORKSHEET

Welcome to Harmoni: Soka Art and Culture and thank you for using this activity worksheet. We hope this worksheet could serve as a tool and reference for you to explore the exhibition and, if applicable, support your teaching efforts. Feel free to download and study the worksheet while planning your tour to our physical gallery at Wisma Kebudayaan SGM, Jalan Bukit Bintang, Kuala Lumpur. At Wisma Kebudayaan SGM, also known as the Grand Cultural Centre of SGM, more than 500 events have been held and over 400,000 people have attended the events since its establishment in 2001.

We recommend that you choose 3 activities for a 60-minute visit or programme. These activities are for children aged four and above and can be carried out with teachers, parents and caregivers in the gallery, at home or in a classroom. These activities are intended to help you facilitate conversations, drawing activities, and

writing activities about art with your students or children. Feel free to use and modify the activities to suit your needs, or even come up with your own fun and exciting activities.



**P**lease prepare your own pencils and paper for any writing and drawing activities. Take note that only pencils are allowed in the gallery. If an accident should occur, a pencil mark is easier to remove than a pen mark. Be careful not to point with your pencil or other objects as this might endanger the artworks.

### Tips:

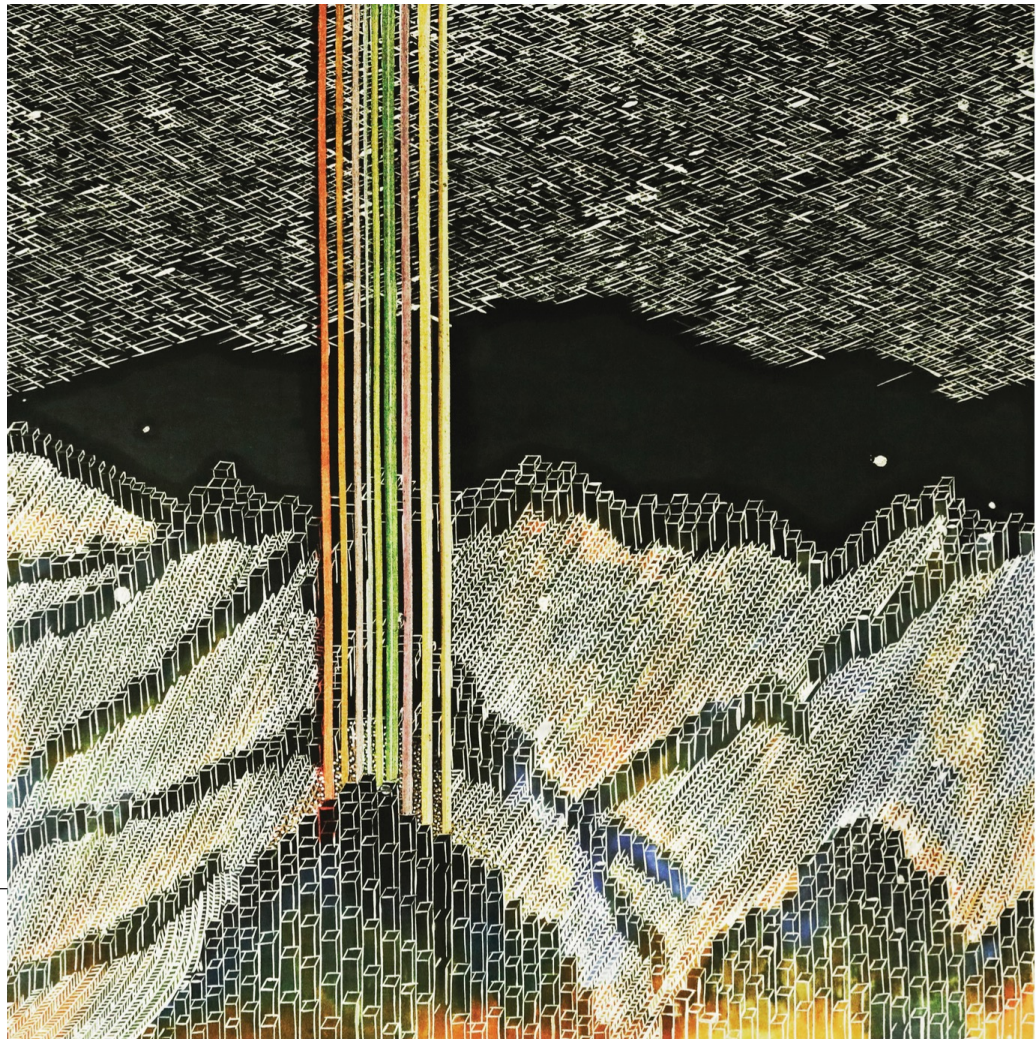
Why don't you go on a drawing date with yourself? Pick a place you want to visit and take your sketchbook with you. Draw the things that call to your attention. If you can't go outside, you can do a virtual museum tour online and pretend that you are there. You can use a few pages of your sketchbook.

### Do you know?

Going to an art gallery or museum is a great way to grab inspiration from other artists and see how they explore different materials, and how you can make a copy of their art in your own style.







**Towering  
Ravines and  
Soaring into  
the Sky**

Shi Xiangfei  
Mixed media  
on fabric  
64.5 x 68cm



**Learn**

Shi Xiangfei is an associate professor at Shandong Light Industry Vocational College and a guest professor at Quancheng College of Jinan University. The composition of the artwork strongly resembles the night scenery of the Great Wall in China. The title “Towering Ravines and Soaring into the Sky,” is derived from the “Biography of Fang Xuanling” in the “Old Book of Tang,” which metaphorically refers to achieving greater success than the others. The predominant colour is black, with nine colourful straight lines breaking through into the sky. The painting mainly consists of lines and colour forms in a structured manner, resulting in a visual effect with modern elements design. From these aspects, we can infer that this artwork symbolises the rise of China and her surpassing other nations’ expectations and achievements.



**Look closely**

Use your finger to trace the lines in the artwork that catch your eye. What does this painting show? How does it make you feel? What words would you use to describe it?

**Activity**

Share your favourite idiom, proverb or famous quote with your friends or family members. In return, listen to their favourite choices.



### Plentiful of Datun Creek

Kuo Ming-fu  
Watercolour  
on paper  
113 x 76 cm  
2016-2021



### Learn

Kuo Ming-fu,  
born in Taiwan in 1950,  
graduated from the  
Department of Fine  
Arts of Taiwan Normal  
University and has a  
master's degree from  
Fontbonne University in  
the United States. He is  
currently the honorary  
chairman of the Taiwan

International Watercolor Association and was the winner of the Chinese Painting Association's "Golden Goblet Awards" for watercolour. Datun Creek is located on the outskirts of Danhai New Town in northern Taiwan and is the second-largest creek in the Tamsui District and one of the few rivers in Taiwan that have maintained its ecological integrity.

In the painting, the sunlight gently and warmly illuminates Datun Creek, creating a sense of comfort and tranquillity. The clear spring water flows down from the mountains, accompanied by the soothing sound of flowing water. It forms small waterfalls and streams, presenting a scene of radiant sunlight. The untouched forest is filled with vitality and teeming with life. The artist skilfully employs delicate painting techniques and colour application to portray the vibrant Datun Creek, allowing viewers to experience the beauty and marvels of nature.



### Look closely

Imagine you were in this place, what might you hear? What might you smell? Is the air still, or do you feel a breeze? What do you imagine you would do in this place?

### Activity

Go on a sensory walk. Go outside and look all around you. What colours do you see? What sounds do you hear? What do you smell? What words would you use to describe this day?





## Moonlight

Muhammad  
Rojana-  
Udomsat  
Batik dye on  
fabric  
169 x 112 cm x  
2 pcs



### Learn

Muhammad Rojana-Udomsat, born in Thailand in 1959 and graduated from the Pho Chang Art College in 1992, is a renowned batik artist and contemporary artist in Thailand. The night sky in the painting is enriched with natural “cracking” patterns created through repeated dyeing process, adding richness in showing the tranquillity of the night. The vibrant lotus pond and lotus flowers are dyed with rich colours, depicting the brilliance of life force. The pair of artworks depicts the same setting on a lotus pond, but one with the full moon on the fifteenth day of the lunar month whereas the other with the new moon on the first day, as if the viewers are in the same place witnessing two contrasting moments in time. This artwork is like a reminder for urban dwellers like us to cherish the moments and immerse ourselves in the beauty of nature.



### Look closely

Imagine yourself standing by the side of the lotus pond, observing the round full moon on one side and the crescent new moon on the other side. What colours do you see? What do the colours and lines make you think of?

### Activity

Create two separate drawings of the same scene but at different times. Display the artworks side by side and compare them. Which one do you prefer?



## Anemona

Kuo Ming-fu  
Galyna  
Otchych  
Watercolour  
on paper  
55.5 x 37cm



### Learn

Galyna Otchych, born in 1960 in Ukraine, is currently the Head of the Ukrainian Branch of the International Watercolor Society (IWS). She is a renowned artist known for her floral paintings and she pays great attention to the subtle differences in

the petals, leaves and stems, skilfully depicting the texture and details of each element, thus creating a sense of depth and layers. Through her brushstrokes, she captures the inherent beauty of various flowers and interprets them with a blend of realism and romanticism. As depicted in the painting, the leaves of the anemona are deep green with white veins along the edges. Its flowers have a unique shape resembling an inverted star or candle. Otchych's works are like a guide for us to appreciate and respect nature while providing us with inner tranquillity and a beautiful visual experience.



### Look closely

How many flowers do you see in the painting?  
What direction do the flowers face? If you have these flowers, where would you put them?

### Activity

Draw the same flower in different styles or draw different flowers in the same style. Have fun and let your creativity flow while drawing!



## Dilettante Fishermen

Nicholas Tan  
Jia Kuan  
Watercolour  
on paper  
56 x 76cm



### Learn

This painting is done predominantly in black, white and grey tones, with accents of yellow and red, adding vibrancy to the composition. It depicts a chaotic and cluttered dock scene with boats loaded with various items. The worn-out boats in this disorganised setting convey a sense of reality and unadorned simplicity in daily life. Standing by the boat, there is a person with an exposed upper body observing the scene, perhaps contemplating how to deal with and organise the chaos on the boat, or contemplating the prospects or uncertainties of his livelihood. The splashes of red and the presence of the human figure add a striking visual impact and vitality to the entire artwork. If we consider the disorderly scene on the boat as representing challenges and difficulties in life, the person standing on the dock symbolises the contemplation and resolution of these issues. When appreciating this artwork, viewers may be prompted to reflect upon and contemplate the orderly and chaotic moments, as well as the current circumstances and choices they make in their own lives.



### Look closely

Try to imitate the pose of the man in the painting. What do you notice about what he is wearing? What might he be doing?

### Activity

Take a moment to think of a story about what could be happening in this artwork. What do you think happened before? What do you think might happen next? Take turns sharing your stories and see how they are similar or different.

## Worldly Affairs

Tung Yue Nang  
Ink on rice paper  
98 x 98 cm



### Learn

Tung Yue Nang studied under the renowned calligrapher, artist and seal carver See Hiang To when he was young. After working as a designer in an advertising company for several years, he has been a full-time artist for over 30 years. With a deep sense of nostalgia, he has been visiting the famous and lively Chinatown in Singapore regularly over the years to sketch and paint. He immerses himself in capturing the various corners, old and new buildings, streets and intersections of Chinatown, using dry ink and smooth lines on rice paper to depict the life and culture of the community in different periods.

His artworks revolve around narrating stories through human figures, which often occupy the foreground of the painting. Similar to the famous painting “Along the River During the Qingming Festival,” he focuses on depicting people’s lives and activities in the bustling cityscape, providing viewers with an immersive experience. The black and white areas in the work also allow for imagination. Therefore, besides their aesthetic value, such artworks possess historical and cultural significance as well.



### Look closely

Bring with you a viewfinder, a type of art tool. Look at the artwork through the viewfinder. What do you see? Now move the viewfinder to a new part of the artwork. Does this change what you see? Keep moving yourself and the viewfinder to look at the artwork in different ways.

P.S. You may make your own and bring it with you or you may loan it from the gallery staff but don't forget to return it before you go home.

### Activity

When you are at a place with many people, pay attention to the different objects and people around you. Write down or draw what you see.



## Visitation Guidelines

A square sign with a thick black border is mounted on a white wall. The sign has a white background with the text "Protecting the Art" in a bold, black, sans-serif font. The word "Protecting" is on the top line, "the" is on the second line, and "Art" is on the third line in a larger font size.

# Protecting the Art

For the protection of visitors and works of art, we ask that visitors travel light and leave all large and oversized bags at home.

Please keep a safe distance of 1 metre between you and the works of art. Do not touch any artwork.

If you feel tired as you talk, write or draw, please take a moment to rest on the benches or designated seating areas in the lobby. Remember not to lean on any wall, partition or artwork.





Children and strollers are welcome to the gallery but parents or caretakers must actively supervise their children at all times.

Please turn your cell phone to the vibrate setting and be respectful of other visitors when using it. Walk at a leisurely pace and maintain a soft speaking volume while appreciating the artworks in the gallery. Running, pushing and roughhousing are not permitted.



## Photography

Except for 8th and 9th floor galleries, we allow photography for personal, non-commercial use only. Flashes and selfie sticks are not permitted.



## Food and Drink

Please plan and have your meals either before or after your visit. There are several restaurants located nearby for your convenience. Food, drink and chewing gum are not permitted in the building. Sealed water bottles and baby bottles are allowed but must be consumed in the lobby.



# MAP

(Driving here or getting here by e-hailing, simply search for Wisma Kebudayaan SGM in your preferred application and let it guide you.)



# Parkings

We have limited parking on a "first come first serve" basis available to visitors free of charge. There are also other paid parking lots nearby.

# MRT

Taking a train? Nearest station: Bukit Bintang MRT or Tun Razak Exchange MRT

**A.** We recommend using the Tun Razak Exchange MRT station. Take Exit A and the gallery is approximately a 10-minute walk from the station via Jalan Delima.

**B.** At Bukit Bintang MRT station, take Exit D and the gallery is approximately a 15-minute walk from the station via Jalan Bukit Bintang.



# Stay Connected

Just as food sustains our body, art nourishes the soul. Art is not only indispensable for our spiritual renewal but also reinvigorates our life force. Stay up to date about events, exhibitions and programmes at Harmoni: Soka Art and Culture by signing up for our website newsletter and following us on Instagram and Facebook.

## HARMONI

Soka Art & Culture



www



We would love to see your work or hear from you! Please share your photos of your favourite artworks on your preferred social media platform and remember to tag us with #HarmoniSokaArt.

Questions? Concerns? Requests?

We are here to help at +603-2144 8686 (Monday to Friday 9 am - 5 pm) or contact Ms. Chung Li, staff from the Art and Exhibition Department at [li.chung@sgm.org.my](mailto:li.chung@sgm.org.my).